

PRIMARY 2



Meet-the-Parents Session (MPS) 2022
Address by School Leader & Year Head
25 January 2022

- **School Matters**
- **Level Matters**

Our Educational Landscape

Environment is changing rapidly due to several driving forces:

- Globalisation
- Advancement in technology
- Geo-political developments
- Society becoming more cosmopolitan



Our Educational Landscape

“...schools will provide **diversity of skillsets** and **education pathways** as MOE looks to re-examine teaching, testing...”

~Minister Chan Chun Sing



Our Educational Landscape

We will continue with the “**Learn for Life**” movement to:

- equip students with stronger abilities, skills and habits for independent and lifelong learning; and
- strengthen our students’ future readiness.



Our Approach

MISSION

To Educate and
Nurture the School
Community For a
Better Singapore

VISION

Lives Empowered, Lives Touched



Theme for 2022

Cherish, Nourish, Flourish



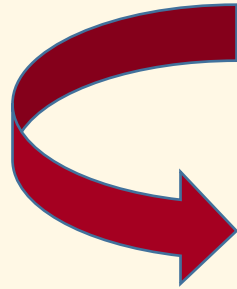
LEVEL MATTERS

Area of Focus
Level Events & Key Programmes
Admin Matters
Assessment



Area of Focus

Acquire Self-Awareness



Apply Self- Management Skills
(to achieve personal well-being and effectiveness)



Level Events & Key Programmes

	Events & Programmes	Date	Remarks
1.	e- Parent-Teacher Conference	27 & 30 May	online
2.	MTL Speech & Drama	Term 2	During curriculum time
3.	MTL Fortnight	28 March – 1 April 4 – 8 April	
4.	Arts Alive	Nov (tbc)	
	Sports Carnival	Semester 2	
5.	PAL	ongoing	

PROGRAMME FOR ACTIVE LEARNING (PAL)



Experiential
in Nature



Learning in a
Creative Way



Incorporates Values
and Social-Emotional
Learning



Fun and
Enjoyable

4

Number of
Periods a week

Modules

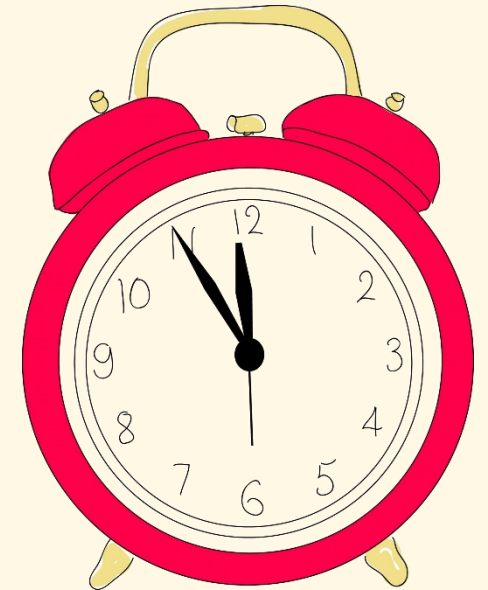


- Outdoor Education
- Performing Arts
- Visual Arts
- Sports and Games



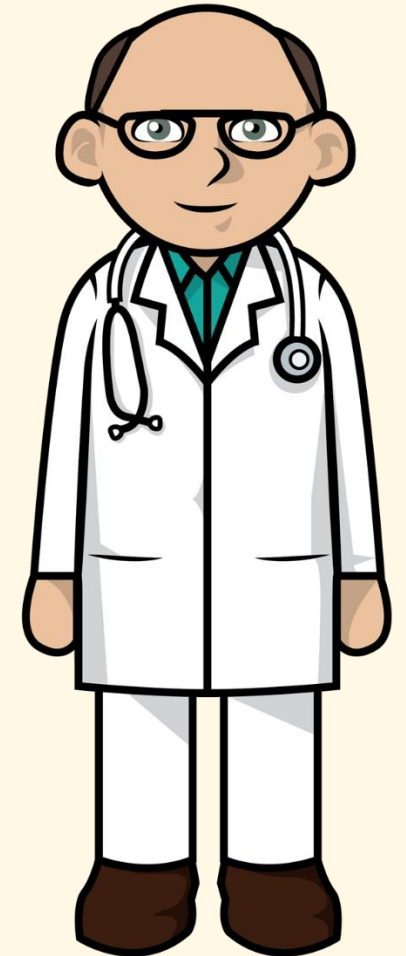
Admin Matters : Attendance

- Come to school punctually.
- Avoid taking child on trips during term time
- (not a valid reason) Principal's approval is required.
- Frequent absences & late-coming
- school will send out an advisory letter.



Admin Matters : Attendance

- Absence on a school day – MC or letter from parent/guardian.
- For early departure on a school day – parent/guardian must be present to sign out the child.



Admin Matters : Morning Routine

In the mornings,

- Pupils are to be seated in the classroom **by 7.25am.**
- We practise **mindfulness** as a school for pupils to be ready before the start of lessons. This promotes better mental health in all.



Admin Matters : Dismissal Routine

- Please take note that dismissal is at **gate 3** at **1.40p.m.**
Please be punctual.
- Should you need to speak to any teachers, you need to walk out of school, all the way to gate 1 and proceed to the office.

Admin Matters : Snack Break & Recess

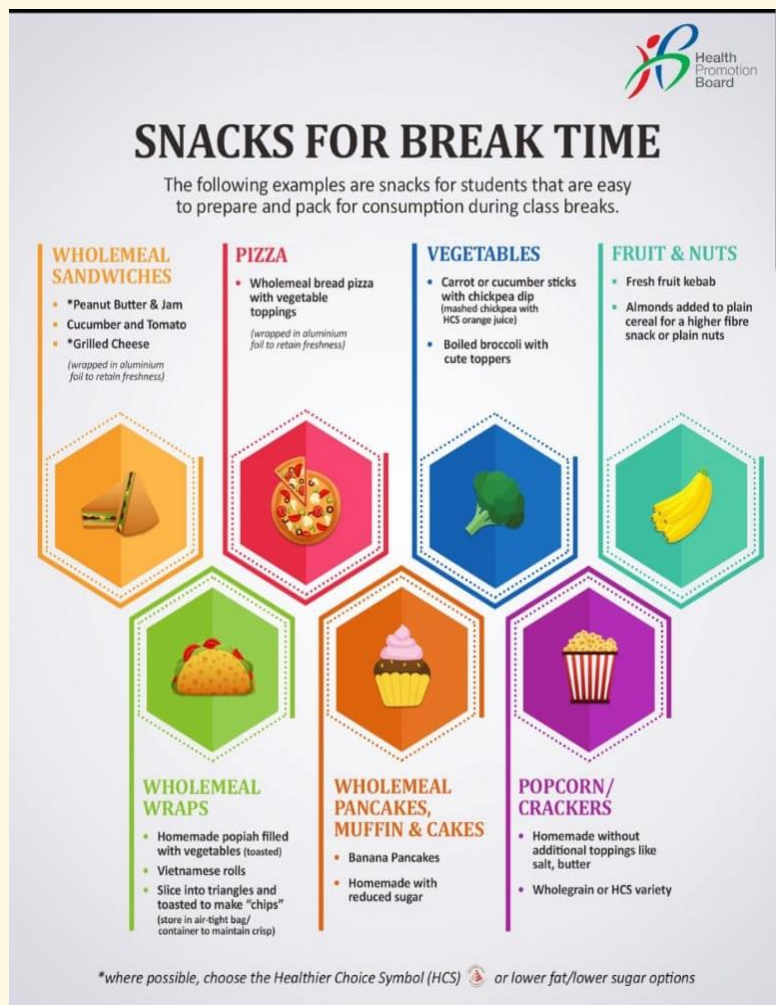


Recess
8.30 -9.00a.m



Snack Time
12 p.m. – 12.10 p.m.

Admin Matters : Recommended Healthy Snacks



- Sandwiches
- Cereal Bars (with healthy logo symbol)
- Wholemeal Biscuits
- Dried fruits and nuts
- Mini apples, pears and grapes

Admin Matters : Birthday Celebrations

- Teachers do acknowledge birthdays of students and encourage the class to make it special. Children may make birthday cards for their friends and sing birthday songs in class.
- However, due to a tight curriculum and sensitivity in dietary needs, parties and party bags are discouraged.

Admin Matters : Safe Management Measures

- We would like to reiterate the need for all students to observe good personal hygiene and exercise social responsibility.
- Students **MUST** bring their Trace Together token to school everyday.



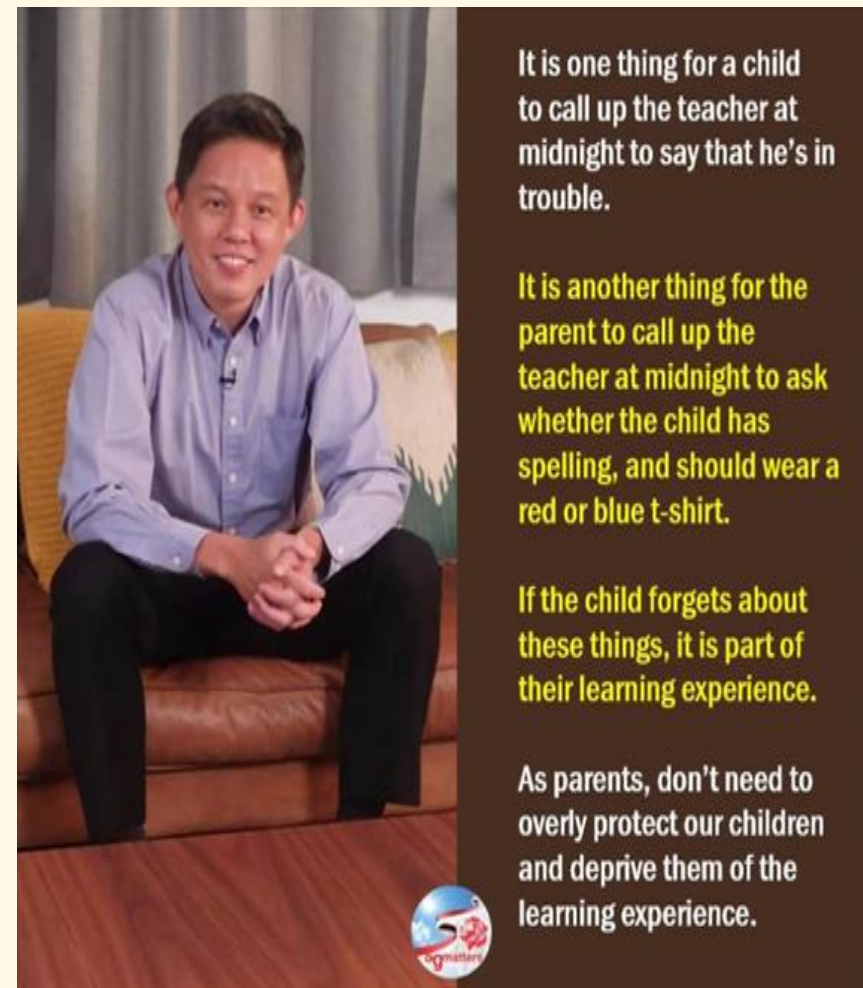
Admin Matters : Communicating with your child's teacher

- Have regular conversations with teachers in both academic and non-academic areas
This will help you better guide your child's development.
- Ask the teacher for the best way and time to contact them.



Instilling the value of responsibility

- Parents are discouraged from dropping off items which their children have forgotten to bring.
- Parents are strongly encouraged to check the school diary daily for homework and announcements.



Homework Policy

Time	Amount of work
Normal school days (Mon to Fri)	<u>(Mon – Fri)</u> <u>Maximum 1.5 hours per day</u> 30 mins for Mother Tongue 1 h for English and Maths
School holidays (Mar, Jun and Sep holidays)*	Mar holidays No homework
	Jun & Sep – 1 week or 10 hours worth of homework
Festive seasons (CNY , Hari Raya Puasa, Hari Raya Haji, Deepavali)	Strictly no homework will be given

How you can support your child at home

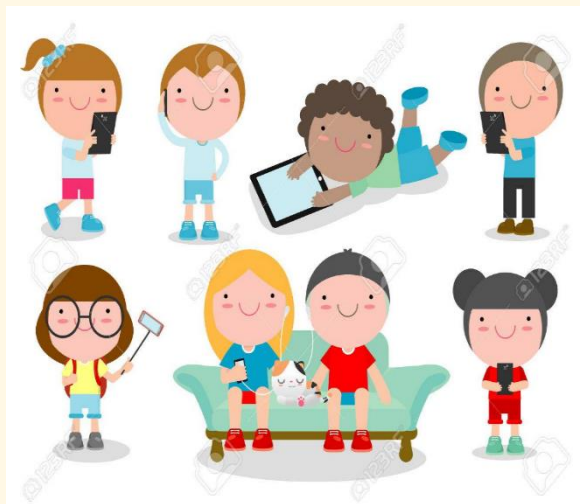


- Support your child and encourage them to overcome challenges with you
- Affirm your child by recognising small successes and praising their efforts
- Familiarise your child by easing them into new routines and sharing with them your experiences in primary school
- Empathise and acknowledge your child's feelings



How you can support your child at home

Monitor the use of
gadgets.
Create technology
Free Zones/Days.



Establish routines, e.g.,
set aside a regular
study time and sleep
time.



Teach them to pack
their bags and keep
them light.



Read with/ read to
your child every day.



How you can support your child at home

Relating to others

- Modelling the use of friendly and polite phrases
- Providing opportunities for your child to share and take turns during playtime with other children.
- Teaching them coping mechanisms (e.g. deep breaths, quiet corner, stop-think-do) to enable them to manage their emotions.



Check out pages 34 - 38 of the PCAB for activities on making friends.

How you can support your child at home

Encourage joy of learning

- not over-emphasising academic performance
- focus on your child's learning journey, rather than compare them to others



Set goals together

Talk about their strengths, abilities and goals and how they can achieve them.



Don't focus only on results

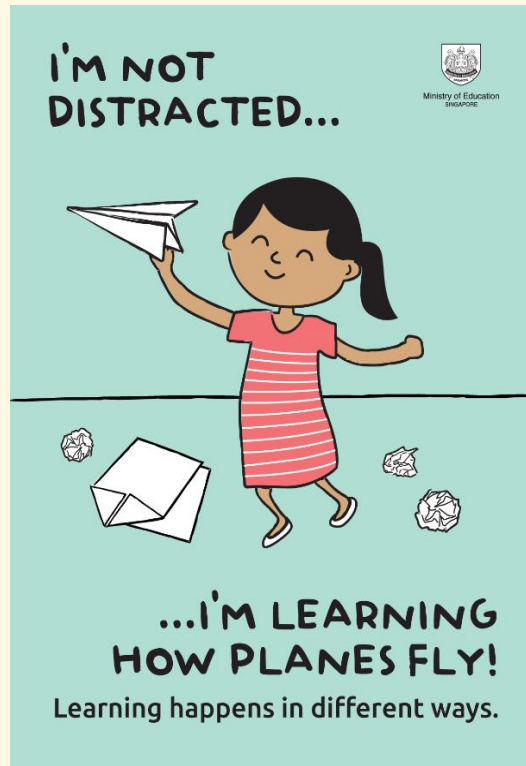
Encourage them to pursue their strengths, interests and try new things.



Don't compare

celebrate their successes instead of comparing with others.

Give our children the time and space to deepen learning



Learn for Life

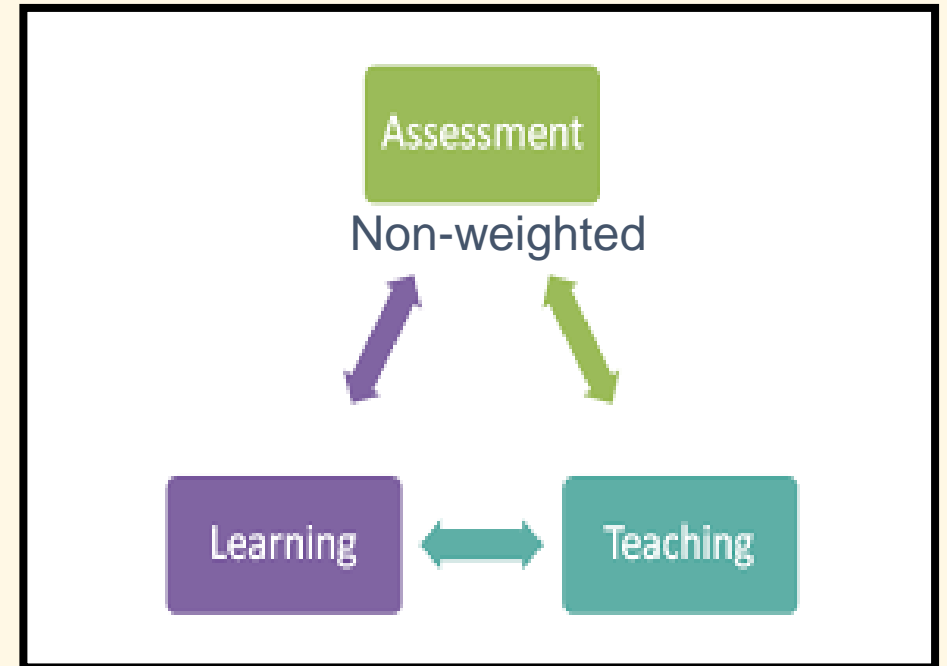
“Let us prepare every child for the test of life,
and not just a life of tests.”

PM Lee, National Day Rally 2012





Assessment : Non-weighted

- To determine pupil's progress and identify areas to be strengthened and improved
- To inform teachers' instructions and decisions for intervention



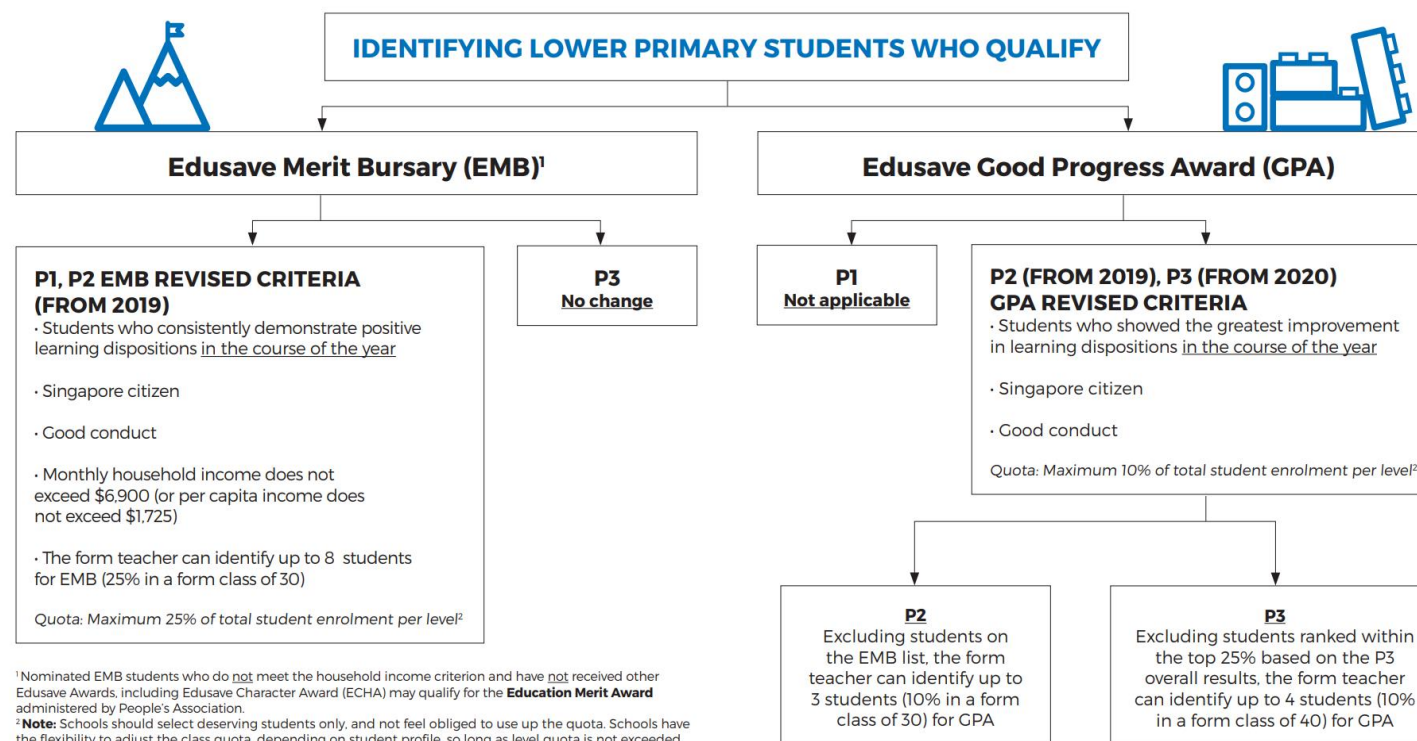
Assessment : Holistic Development Profile (HDP)

For illustrative purposes only.		Holistic Development Profile	
		Date : 6 Nov 2019	
Name	: Jane Ong	Identification No : T0612345F	
Age on 1 st Jan	: 6	S/N : 5	Course : Primary One
Class	: P1-Respect		
Form Teacher	: Miss Tan	<div>IP Departments decide to use 3, 4 or 5 Learning Outcomes for each subject.</div> 	<div>EFPS decide to use 3-levels of qualitative descriptors and customise them.</div> 
Co-Form Teacher	: Miss Low		
SUBJECT			
MATHEMATICS			
<ul style="list-style-type: none"> Understands number notations, representations and place values up to tens. 			Proficient
<ul style="list-style-type: none"> Understands the concepts of addition and subtraction, including the relationship between adding and subtracting. 			Developing
<ul style="list-style-type: none"> Matches, sorts, compares and orders quantities/objects (e.g., by colour, shape, size or orientation.) 			Developing
<ul style="list-style-type: none"> Adds and subtracts reliably and fluently using number facts. 			Beginning

Edusave Award

Revised Selection for Edusave Merit Bursary (P1, P2) & Edusave Good Progress Award (P2, P3)

THESE EDUSAVE AWARDS REMAIN IMPORTANT AS THEY CELEBRATE A CHILD'S LEARNING MILESTONES, AND ENCOURAGE PROGRESS AND EFFORT. THE AWARDS ALSO RECOGNISE THE IMPORTANCE OF CULTIVATING THE RIGHT LEARNING DISPOSITIONS FROM A YOUNG AGE.



Criteria used to identify students with positive learning dispositions

4Cs	All the time	Most of the Time	Sometimes
Curiosity <i>Curious Learner</i> (asks questions and also actively seeks out the answers)			
Collaboration <i>Collaborative Contributor</i> (works effectively as an interdependent team member)			
Connection <i>Connected Pupil- Morally Upright & Emotionally Intelligent</i> (has social awareness and applies good interpersonal skills)			
Confidence <i>Confident Leader</i> (has self-awareness and applies self-management skills for personal effectiveness)			

THANK YOU



You may pose questions by scanning the following QR Code or visiting the following link:

<https://tinyurl.com/EFPS2>

We will get back to you on your queries.

